

Now with
Higher Lift Capacity

New
75 HP ^{55.9kW} **4WD**
Model 5075 E
with **Inline FIP**
and
PowrReverser™

Do Kadam Aage...



Forward - Reverse tractor
without operating clutch and gear



Saves time,
increases productivity!



*Conditions apply.



Hood Lock



Wide Range of Speed



On Wet Clutch



Electro-Hydraulic Wet Clutch

*Zindagi ka
Best Decision!™*



JOHN DEERE

TECHNICAL SPECIFICATIONS

ENGINE

| | |
|------------|--|
| Type | : 75 HP (55.9 kW), 2400 RPM, 3 Cylinders, Direct injection, Turbo charged, Inline FIP, Coolant cooled with overflow reservoir |
| Air filter | : Dry type, Dual element |

TRANSMISSION

| | |
|-------------------|---|
| Clutch | : Dual, Wet Clutch Technology, Suspended type pedals, Electro-Hydraulic Operation |
| Gear box | : 12 Forward + 12 Reverse Top Shaft Synchromesh (TSS) |
| Speeds | : Forward 1.7 - 35.2 kmph Reverse 1.8 - 38.3 Kmph |
| Forward & Reverse | : Through lever on steering column |

BRAKES

| | |
|--|--|
| | : Self adjusting and self equalising, hydraulically actuated, Oil immersed disc brakes |
|--|--|

HYDRAULICS

| | |
|--------------------------|--|
| Maximum Lifting capacity | : 2000 kgf |
| 3 point linkage | : Category - II Automatic depth & draft control (ADDC) |

STEERING

| | |
|------|---------|
| Type | : Power |
|------|---------|

POWER TAKE OFF

| | |
|----------|--|
| Type | : Electro-Hydraulic Wet Clutch Dual, Independent, 6 Splines |
| Standard | : 540 @ 2376 ERPM |
| Economy | : 540 @ 1705 ERPM |

WHEELS AND TYRES

| | |
|-------|------------------------------------|
| Front | : 12.4 x 24 (0.31 x 0.61 m), 8 PR |
| Rear | : 18.4 x 30 (0.47 x 0.76 m), 12 PR |

FUEL TANK

| | |
|----------|----------------------|
| Capacity | : Rear mounted, 68 L |
|----------|----------------------|

ELECTRICAL SYSTEM

| | |
|--------------------|---|
| | : 85 Ah, 12 V battery, 43 Amp. Alternator, 12 V, 2.5 kW Starter motor |
| Instrument cluster | : LCD display (Hour meter, Tractor speed and PTO RPM monitor) |

WEIGHT AND DIMENSIONS

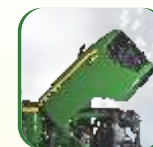
| | |
|----------------|-----------|
| Total weight | : 2600 kg |
| Wheel base | : 2050 mm |
| Overall length | : 3630 mm |
| Overall width | : 1850 mm |

ADDITIONAL FEATURES

- Finger-Touch Electro-Hydraulic Forward Reverse Lever with Neutral
- Maintenance-free Wet Clutch Technology
- Heavy Duty Front and Rear Axle
- Car type Engine On/Off
- ROPS - Roll over protection structure

5075 E also available in base model without *PowrReverser*™

New 75 HP ^{55.9kW} 4WD Model 5075 E with **Inline FIP** and **PowrReverser™**



Automatic hood opening
Single piece hood opening
with gas struts



Finger guard
Enhanced safety



Side bar & steps with mat
Climbing up and down the tractor
is now easier



Operator Presence Switch
Tractor will not move
if there is no operator on seat



**Electro-Hydraulic
Operated
PTO Switch**



**High torque
reserve**
More productivity

John Deere Genuine Parts

| Economical | Reliable |
| Easily available |



John Deere India Private Limited

3rd floor, Tower-15, Cybercity, Magarpatta City, Hadapsar,
Pune - 411013. Maharashtra. www.JohnDeere.co.in

For more information, please contact our authorised dealer or nearest area office.



- Tractors • Implements
- Harvesters • Finance



JOHN DEERE