

POWER  
TECHNOLOGY  
3.0

*Zindagi ka  
Best Decision!™*



JOHN DEERE

**DO  
KADAM  
AAGE....**



TremIV

# *Get Future Ready*

The future is green. You have always made the choice to go ahead with a winning attitude and consciousness for nature. With your efforts and vision, and our power & technology, let us now reach the new horizon with an edge over the others.

John Deere presents 5305, 5310, 5405 & 5075 AC Cab with advanced features such as - New Fascia, Dual Torque Mode and LED Headlamp equipped with the future standard TREM IV.

Experience all new improvements in features that give you the speed, power advantage and stylish new looks that capture everyone's attention! All this, with the standard adherence that spells eco-friendly, TREM IV.

Welcome the future today.



More speed range



High Back-up torque



Increased lift capacity







New  
**5310**  
GearPro™

New  
**5075<sup>E</sup>**  
AC Cab



New  
**5305**

New  
**5405**  
GearPro™



# FEATURES

Trem<sup>IV</sup>



Increased Lift Capacity  
(2500 kg)



High Back- Up Torque



More Speed Range  
(12 Forward & 4 Reverse)



New Styling Hood  
With Louvers



LED Headlamp



HPCR (High Pressure Common Rail )  
Fuel Injection System



Dual Torque Mode



Longer Service Interval  
(500 hrs.)

# FEATURES

Trem<sup>IV</sup>



Combination Switch



Factory Fitted 2nd SCV



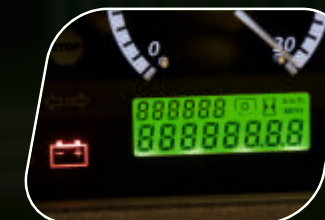
Wider Platform With  
Rear Floor Extensions



Floor Mat



Electical Quick Raise and  
Lower (EQRL)



Digital Instrument Cluster



Seat With Improved Comfort

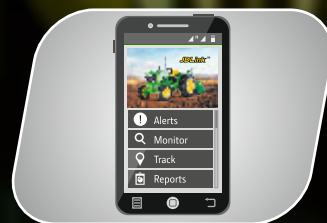


**PowrReverser**



# FEATURES

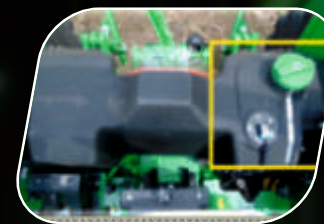
Trem<sup>IV</sup>



JDLink™



Mechanical Quick Raise and Lower (MQRL)



Increased Fuel Tank Capacity (71 Litres)



24F + 12R Speed With PR



Radiator Screen



PC DC Quadrant With Individual Locking



Tilt Steering



Hand & Foot Throttle



## Features Specification

Details	5305	5310	5405	5075E
Engine	55 HP	55 HP	63 HP	75 HP
	John Deere 3029H, 2100 EPRM, 3 cylinder, Turbo charged, HPCR fuel injection system			
Transmission				
Clutch	Dual clutch,	Dry Dual clutch, Dry Electro Hydraulic(EH) clutch (optional)		
Gear box	8 Forward + 4 Reverse	12 Forward + 4 Revere speed		
Brakes	Oil immersed brakesSelf adjusting, self equalising, Hydraulically actuated, Oil immersed brakes			
Hydraulics				
Maximum lift capacity, kgf	1600	2000, 2500 (optional)		
Fuel tank				
Capacity - litres	60	71		
Dimension & Weight				
Total weight, kgs - 2WD	2WD - 2100	2WD - 2300	2WD - 2320	2WD - 2450
Total weight, kgs - 4WD		4WD- 2580	4WD- 2600	4WD - 2700
Wheel base, mm	2020	2050	2050	2050
Overall length, mm	3512	3678	3678	3678
Overall width, mm	1844	2243	2243	2243
Tyre - 2WD				
Front	6.0 x 16 8PR, 7.5 x 16, 8PR (optional)	6.5 x 20 8PR 7.5x16, 8PR	6.5 x 20 8PR	-
Rear	14.9 x 28 12PR, 16.9 x28 12PR (optional)	16.9 x 28 12PR	16.9 x 30 12PR, 16.9 x 28 12PR (optional)	-
Tyre - 4WD				
Front	-	9.5 x 24 , 8PR	9.5 x 24 8 PR 11.2 x 24 8PR	11.2X24 8PR 12.2 x 24 8PR
Rear	-	16.9 x 28, 12PR	16.9 x 28 12PR, 16.9 x 30 12PR(optional)	16.9X30 12PR, 18.4 x 30





POWER  
TECHNOLOGY  
3.0

